



DECISIVE VISION COMPANY

Built To Last
www.decisive-vision.com

Company Snapshot: Engineering Certainty



Legal Name

Decisive Vision Company



Business Type

Contracting & Industry



Markets Served

Saudi Arabia & Egypt



Core Capabilities

Integrated Industrial Solutions, Professional Engineering & Execution Services, and Engineered Industrial Systems.



Key Differentiators

Single-point accountability, engineering-first delivery philosophy, and a focus on measurable outcomes.

Our Guiding Philosophy

“We exist to **engineer certainty** — where others deliver uncertainty.”

Vision

To engineer certainty where others deliver uncertainty.

Mission

To solve industrial problems with clarity, discipline, and accountability, focusing on depth of impact over volume of projects.

Core Values

- **Engineering Driven by Evidence:** We rely on data, not habit.
- **Single-Point Accountability:** We own outcomes, not just scopes.
- **Disciplined Execution:** We deliver with control, not improvisation.
- **Predictability:** We engineer systems to prevent surprises.
- **Integrity & Trust:** We protect client confidentiality and build relationships on technical credibility.

Accountability Architecture

- **Leadership Principle:** One Project Manager. One Technical Authority. No ambiguity in leadership.
- **Interface Control:** Defined scope boundaries and discipline-level ownership prevent scope gaps and rework.
- **Communication Discipline:** Structured reporting, formal change control, and early issue escalation protocols are standard.
- **Engineering Governance:** Design review gates and interface responsibility matrices ensure compliance and buildability.
- **Full Organizational Chart:** Data not found in uploaded sources.



Three Models of Engagement



SOLUTIONS (Core Offering)

For clients requiring performance, optimization, and risk ownership. We provide end-to-end responsibility and outcome-driven programs.



SERVICES

For clients with a defined scope who retain overall system responsibility. We provide professional engineering and execution support.



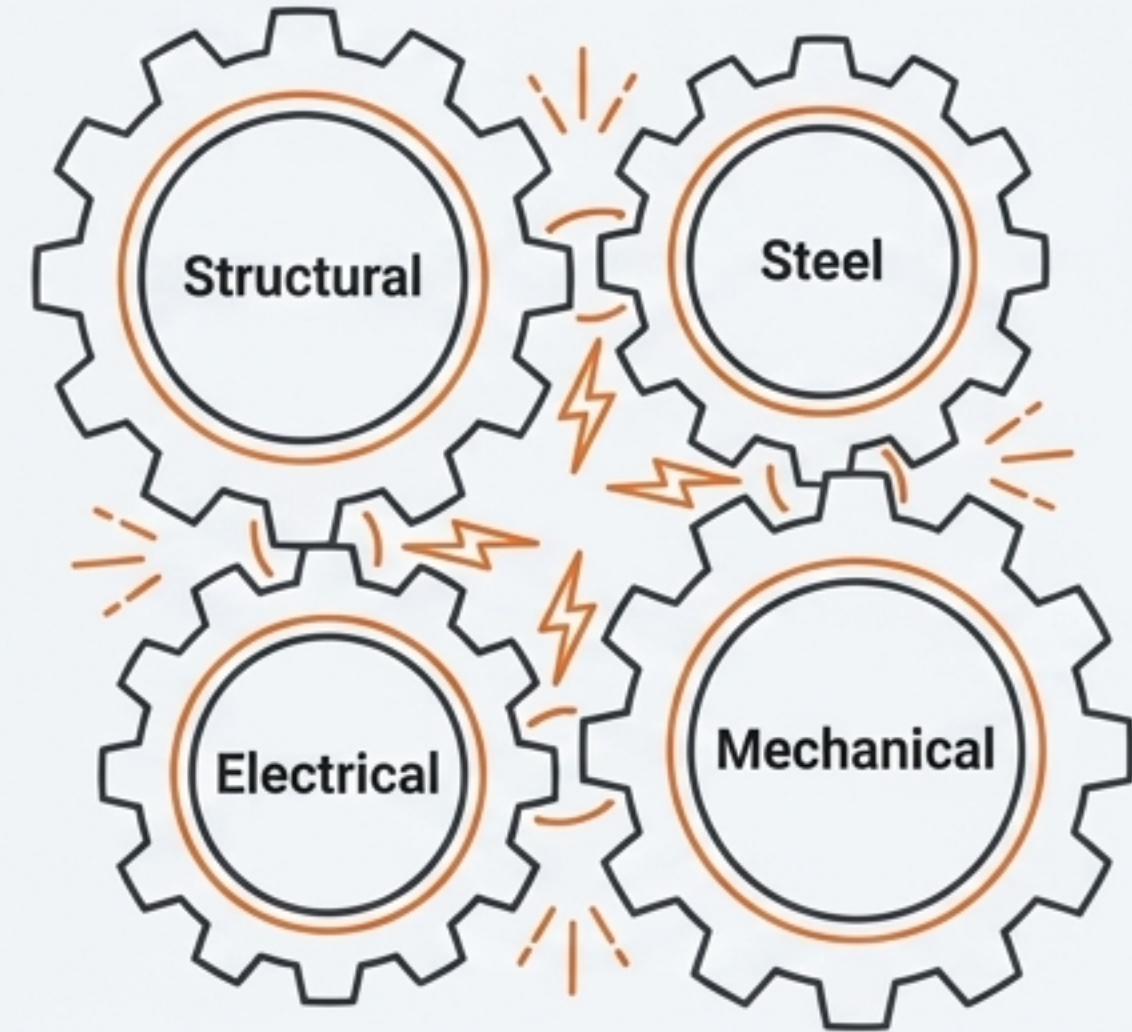
PRODUCTS

For clients who require manufactured or localized systems delivered to specification. We supply engineered systems and industrial equipment.

Engineering-First Delivery

- **Multi-Discipline Support:** Integrated engineering across Structural, Steel, Electrical, Power, Fire & Life Safety.
- **Process Engineering:** Analyzing system interactions, validating duty cycles, and identifying bottlenecks.
- **Layout Optimization:** Evaluating plant layouts for operational flow, material continuity, and maintenance access.
- **Technical Documentation:** Transforming engineering into site-ready instructions like shop drawings and method statements.

Interface & Constructability Reviews

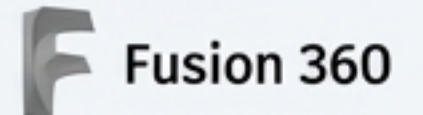


Resolving failure points between disciplines to prevent rework.

Engineering Tools:



Studio
5000



Solutions Portfolio: Owning the Outcome



Turnkey / EPC

End-to-end delivery of complete facilities, from concept definition through operational readiness and handover.



Design-Build

Integrated engineering, procurement, and construction for projects like industrial buildings and support facilities.



Plant Relocation

Complete relocation programs with full responsibility for functionality at the new site.



Energy Optimization

Engineering programs focused on turning energy loss and inefficiencies into measurable financial gains.



Rehabilitation & Modernization

Turnkey upgrades of existing assets to restore performance, improve safety, and meet modern standards.

Services Portfolio: Professional Execution Support



Installation

Disciplined execution of steel structures, equipment installation, and process systems.



Engineering Support

Providing layout optimization, process support, and constructability reviews.

Consulting

Delivering technical feasibility studies, CAPEX/OPEX estimation, and asset condition assessments.



MEP & Utilities

Engineering and installation of HVAC, power distribution, and fire & life safety systems.



Maintenance & Upgrading

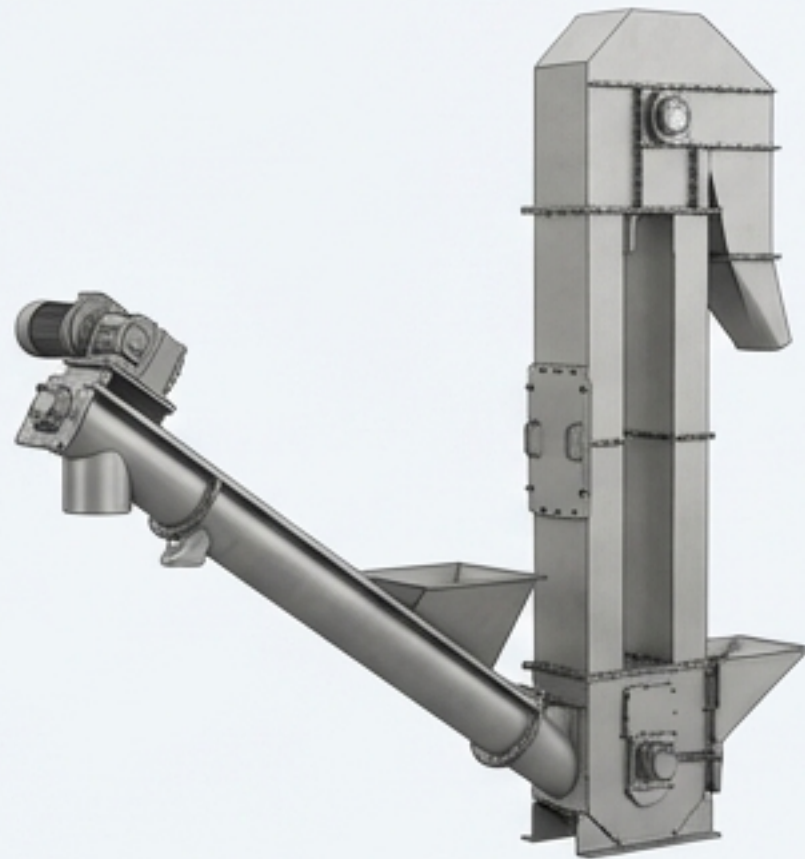
Services to extend asset life, including preventive maintenance and equipment retrofits.

Product Portfolio: Engineered Industrial Systems



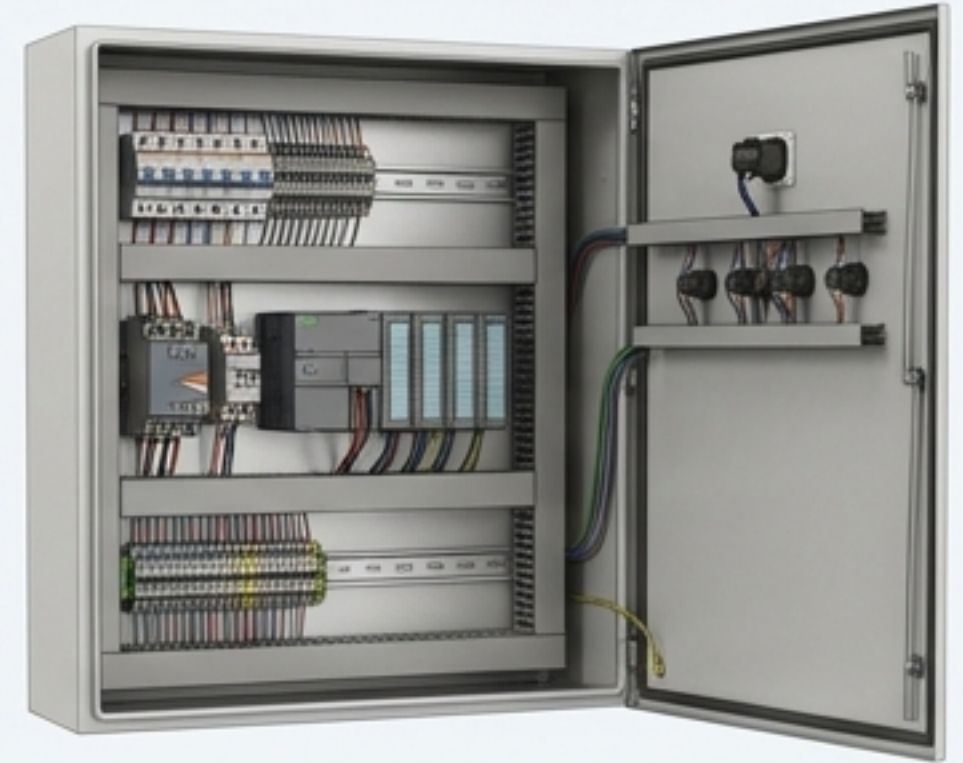
Storage & Tanks

Safety-critical, code-compliant systems for bulk solids (silos) and liquids (tanks).



Processing & Handling Systems

Engineered solutions for mechanical, vertical, and pneumatic conveying of bulk materials.



Automation & Control

PLC-ready control panels, MCCs, and SCADA/HMI platforms to make systems intelligent and measurable.

Integrated Plant Packages

Coordinated multi-equipment systems for feed/flour production, agro-industrial processing, and bulk material handling.

Utilities & Environmental Systems

Modular systems for HVAC, dust collection, compressed air, and fire protection.

Applied Expertise Across Industries



Agro-Industrial (Feed & Flour Mills)

Specialized solutions for feed milling, flour production, and grain processing facilities.



Food Processing

Systems for packaging, conveying, and automated processing in food manufacturing.



Concrete & Construction Materials

Engineering for batching plants, precast concrete, and material handling.



General Manufacturing & Fabrication

Automated systems for assembly, welding, and material fabrication processes.



Industrial Infrastructure & Logistics

Integrated solutions for warehousing, port facilities, and logistics hubs.

Key Projects: A Record of Governed Delivery



Turnkey Feed & Flour Mill

- **Scope:** Full greenfield facility delivery.
- **Outcome:** Operationally ready plant delivered with single-point accountability.



Industrial Factory Buildings (EPC)

- **Scope:** Full EPC for structures up to 16,000 m².
- **Outcome:** Production-ready facility with full engineering governance.



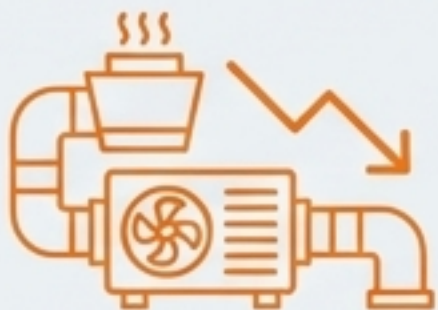
Concrete Plant Relocation

- **Scope:** Complete re-engineering and relocation program.
- **Outcome:** Preserved CAPEX and predictable performance at the new site.



Firefighting Systems Program (20 Sites)

- **Scope:** Modernize fire protection across 20 industrial sites.
- **Outcome:** Full audit compliance and enhanced safety at scale.



HVAC & Utilities Optimization

- **Scope:** Upgrade oversized utility systems.
- **Outcome:** Measurable energy savings and lower OPEX.



Fire Alarm System Migration

- **Scope:** Legacy Simplex to Honeywell system migration.
- **Outcome:** Modern, intelligent safety system with zero downtime to client operations.

Governed Delivery: Our Commitment to Control

EPC Delivery Flow



Quality Control

- Independent QA/QC loops, Inspection & Test Plans (ITPs), and audit-ready documentation.



Health & Safety (HSE)

- A zero-incident culture driven by method-driven execution and strict Permit-to-Work (PTW) systems.



Project Governance

- Single-point accountability, engineered schedules, and integrated risk management.

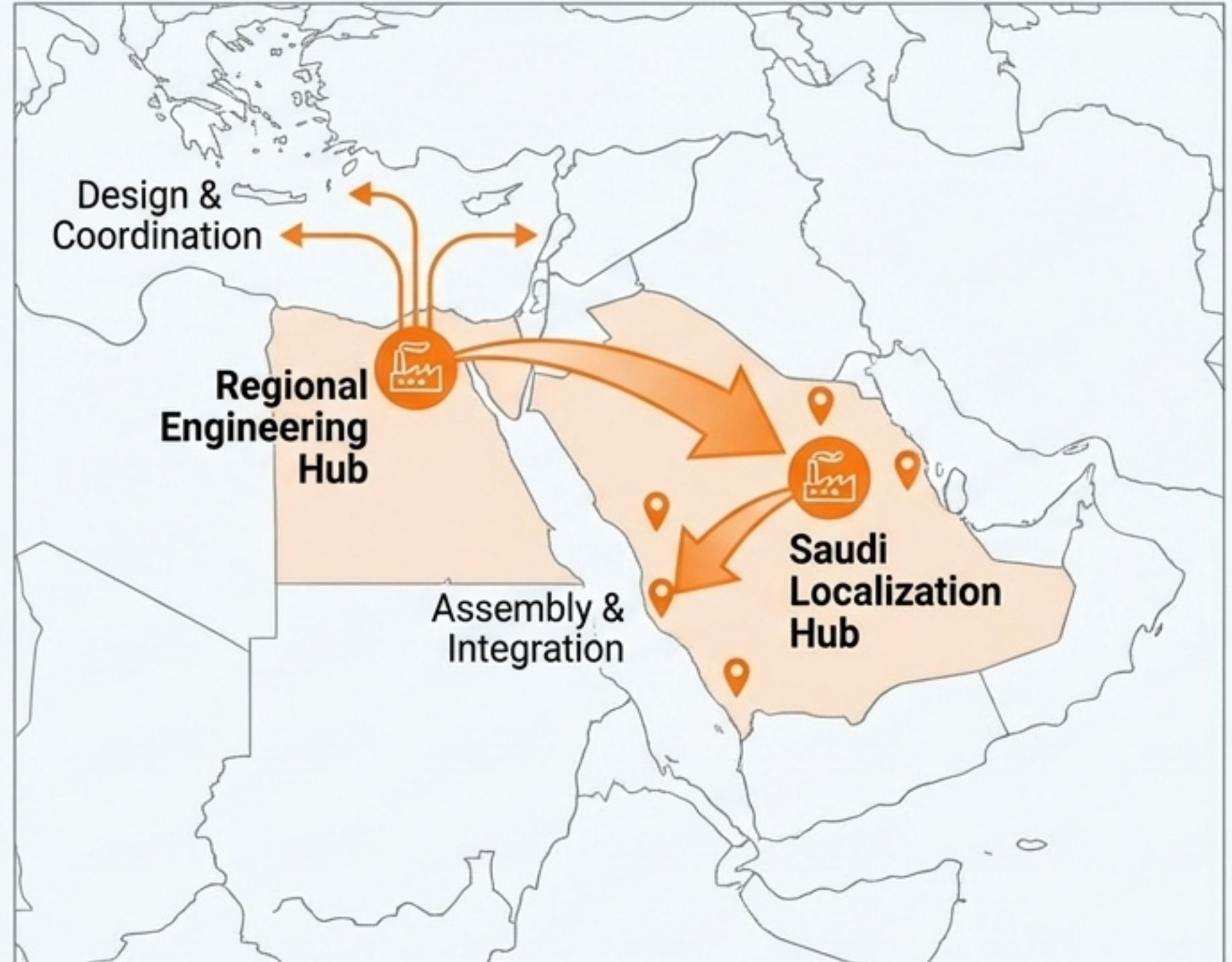


Compliance Philosophy

- We apply only relevant and required standards (NFPA, ASME, etc.) to ensure practical applicability and audit readiness.

Localization & Regional Presence

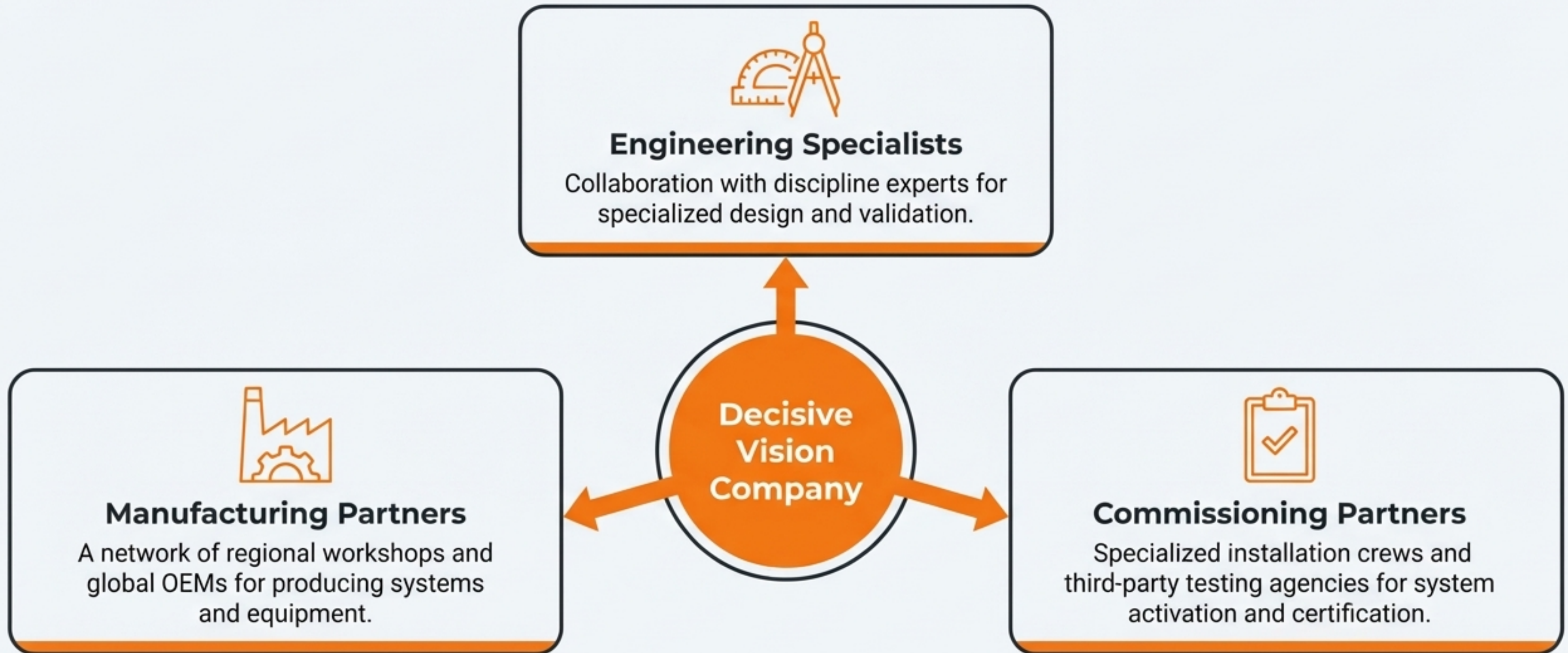
- **Dual-Hub Supply Model:** A manufacturing platform balancing engineering depth with local execution speed.
 - **Regional Engineering Hub:** Focuses on design depth, manufacturing coordination, and cost optimization.
 - **Saudi Localization Hub:** Manages assembly, site integration, and local regulatory alignment.
- **Benefits:** Reduced lead times, optimized costs, and international standards with strong local support.
- **IKTVA Program:** Data not found in uploaded sources.



Strategic Partnerships: Competence Over Convenience

Delivery Philosophy:

Our model is enabled by a project-specific partner ecosystem selected based on competence, not convenience.



The Decisive Vision Difference



Single-Point Accountability:

We transfer risk from the client to us through our 'Solutions' model.



Engineering-First Philosophy:

We solve problems in the design phase for 'Zero-Surprise Execution' on site.



Engagement Flexibility:

Our Solutions, Services, and Products model allows clients to choose their required level of engagement.



Transparent Control:

We provide predictable systems and disciplined execution, backed by audit-ready documentation.



Outcome Ownership:

We deliver operational readiness and verified performance, not just completed scopes.

We Engineer Certainty

Digital Transformation & Decision Intelligence

- **Technology Adoption Roadmap:** A structured approach to integrating advanced digital tools into our delivery model.



- **Digital Twins & Simulation:** Used for performance prediction and scenario testing before physical construction.



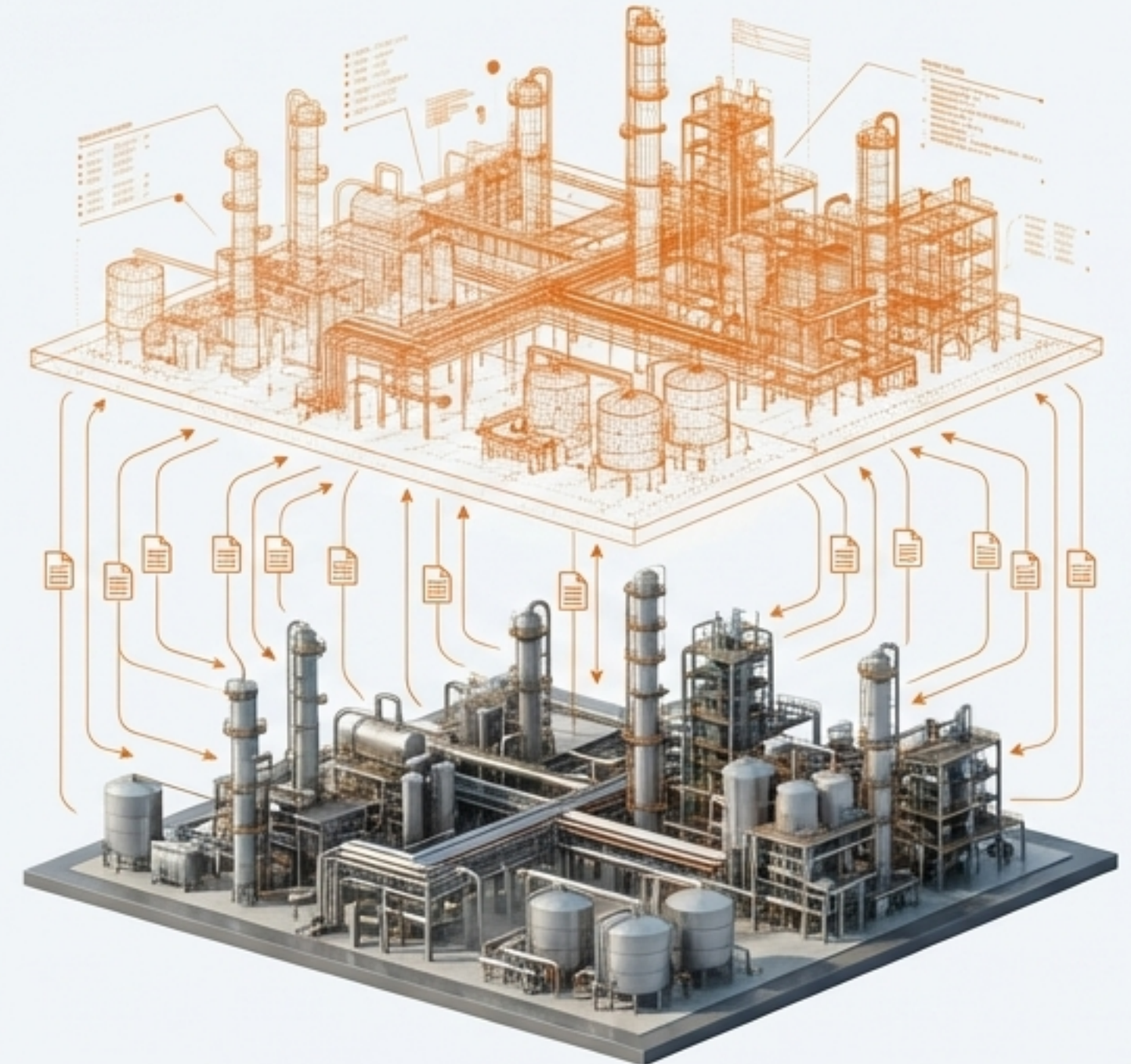
- **Smart Sensors & IIoT:** Leveraged for asset monitoring and real-time optimization of operational performance.



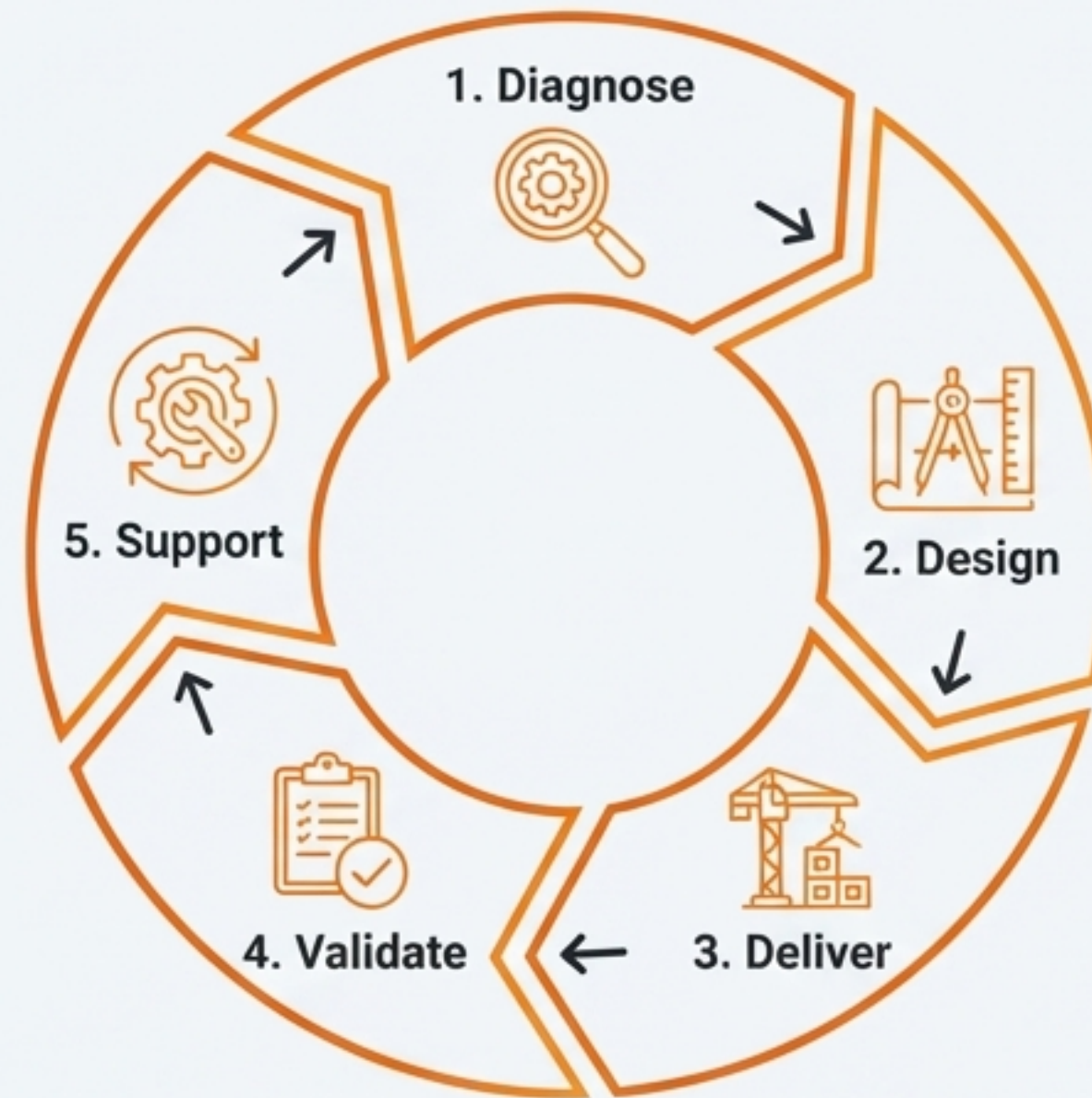
- **Modular & Off-Site Manufacturing:** Implemented to reduce project timelines and ensure controlled quality.



- **AI-Assisted Engineering:** Employed to enable faster, risk-weighted design decisions.



Your Partner Across the Plant Lifecycle



1. Diagnose

- Feasibility studies, technical consulting, and asset condition assessments to define constraints and risks.

2. Design

- Engineering optimized solutions with a focus on constructability and operational performance.

3. Deliver

- Executing projects with controlled cost, schedule, and quality.

4. Validate

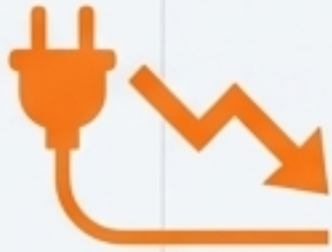
- Ensuring performance through rigorous commissioning, testing, and verification.

5. Support

- Extending asset life through post-delivery optimization, maintenance, and rehabilitation services.

Sustainability as an Engineering Outcome

Sustainable Engineering



Energy Optimization

Our programs directly reduce energy consumption and lower OPEX.



Emissions Control

We design and upgrade industrial dust collection and filtration systems to improve air quality.



Asset Life Extension

Our rehabilitation, modernization, and relocation solutions promote a circular economy by reusing existing assets.

- Waste Reduction: Our focus on flow-centric material handling minimizes spillage and material loss.
- Full ESG Policy: Data not found in uploaded sources.

Trust Earned On Site

“Repeat work is our
strongest reference.”

- **Client Engagement Categories:** We serve Asset Owners, Developers, EPC Contractors, and Consultants.
- **Why Clients Return:** They value our engineering-driven approach, predictable systems, and site discipline.
- **Confidentiality Commitment:** NDAs are strictly respected. Client names are shared only during formal qualification stages with prior approval.

“We build relationships based on technical credibility, disciplined execution, and absolute respect for confidentiality.”

Let's Engineer the Right Decision

Our Commitment: We respond with engineering insight, not sales brochures. Inquiries are reviewed by engineers.

Saudi Arabia

Omar Bin Alkhattab St., Al-Dabab District, Dammam

☎ **KSA:** +966 54 526 2787

Egypt

Cairo-Alexandria Agricultural Road, Siberbay, Tanta

☎ **Egypt:** +20 106 566 5901

✉ **Email:** Info@Decisive-Vision.com |
Engineering@Decisive-Vision.com



Contact us to begin a technical evaluation of your needs.
Our engineers will provide an initial direction within 24-48 hours.